



The Certification Mark for Onsite
Sustainable Energy Technologies

MCS Overview & Updates

Ground Source Energy Expo

14th September 2016

Imogen Jamie
MCS Consultant

Ground Source Heat Pump Association

Contents

- Overview of MCS
- MCS Structure and coverage
- Heat Pump key activities
- Updates and future activities



The Certification Mark for Onsite
Sustainable Energy Technologies

MCS Overview

- Microgeneration Certification Scheme (MCS)
Certification scheme for renewable technologies
- Industry-led
- Quality assurance



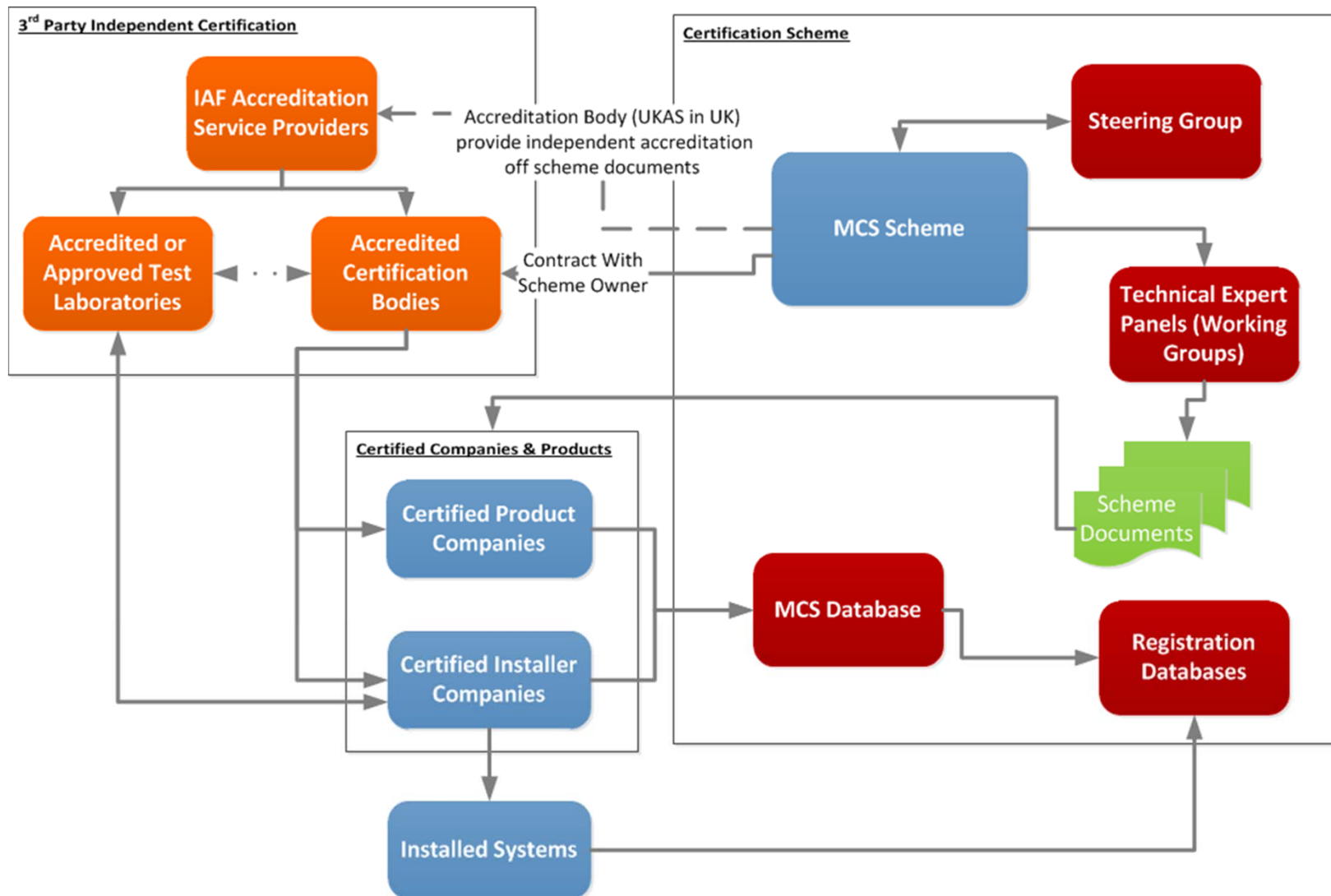
The Certification Mark for Onsite
Sustainable Energy Technologies

MCS Scheme Coverage

Category	Technology
Electricity generating technologies up to 50kW	<ul style="list-style-type: none">• Solar Photovoltaics (PV)• Micro-Wind (medium wind extension to circa 400kW under review)
Heat generating systems up to 70kWth (each installed product has a max. 45kWth)	<ul style="list-style-type: none">• Solar Thermal• Heat Pumps• Biomass
Co-generating technologies (electricity and heat)	<ul style="list-style-type: none">• Micro Combined Heat and Power (CHP)



MCS Operating Structure



Accredited Certification Bodies

Products



Installation Companies



What Does it Cost?

- Charges for installers agreed by the Steering Group
 - £110 per year
 - £15 per installation
- Charges for products on a sliding scale
 - £425 / £325 / £225 / £125

Does not include Certification Body fees



The Certification Mark for Onsite
Sustainable Energy Technologies

Heat Pumps – Key Activities

Energy Related Products Directive (ErP)

- Came into force on 26th September 2015. Transition period ended on 26th March 2016.
 - MCS updated the standards and produced a Seasonal Co-efficient of Performance (SCoP) spreadsheet aligned with the methodology in The Ecodesign of Energy Related Products Directive.
 - The SCoP value replaced the Seasonal Performance Factor which is the figure used for the RHI.
 - All MCS ErP compliant heat pumps can be found on our website. The installer has to select the designed flow temp to be given a SCoP value.
 - A meeting will be taking place to discuss the role of NMO and heat pump surveillance on 19th September



Heat Pumps – Key Activities (2)

MCS Simplification Sub-Group

- Update the heat pump installer standard: MIS 3005 in light of regulatory changes
- Make the requirements easier to understand for installers and CBs
- Balance the responsibilities of designers and installers
- Improve flexibility and performance.



The Certification Mark for Onsite
Sustainable Energy Technologies

Heat Pumps – Key Activities (3)

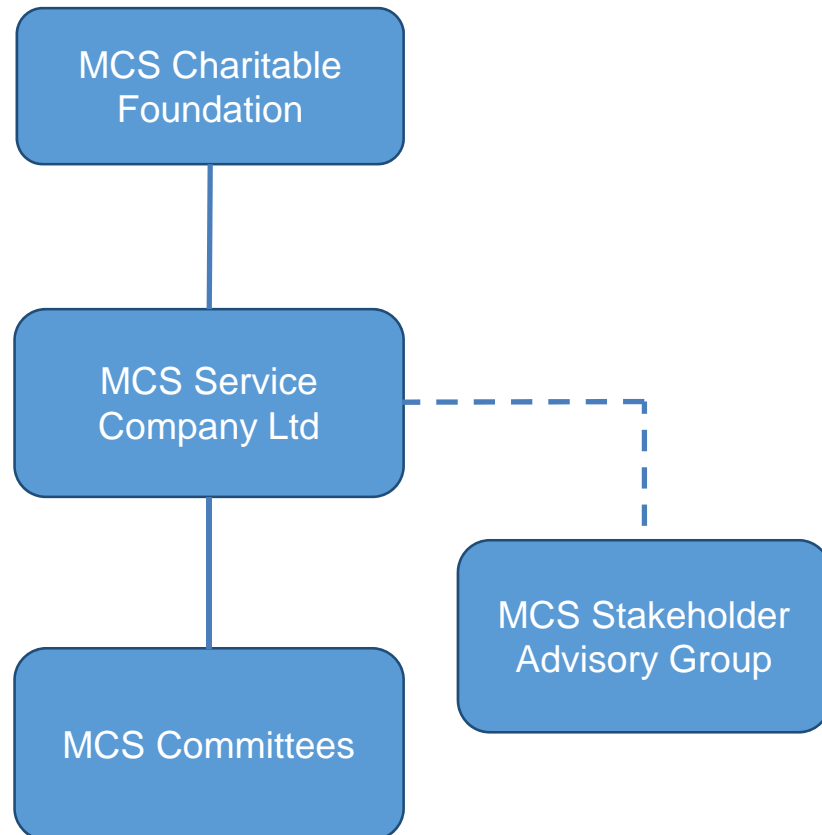
Distribution Network Operators (DNOs)

- 3 forms were created to introduce a standardised process for connecting heat pumps to the local electricity network
- It appears that the DNOs are applying an inconsistent approach to administering the notification forms
- A meeting took place to discuss which consent forms are required and when



The Certification Mark for Onsite
Sustainable Energy Technologies

Updates: new MCS structure



- Undergone novation process
- 2 tier structure – MCSSCo wholly owned subsidiary of Charitable Foundation
- Charity has been incorporated
- Trustees and Directors appointed
- Steering Group replaced with Stakeholder Advisory Group – advice directors but no decision making

Future Scheme developments

- Performance Estimates – heat technologies
- Focus on establishing new MCS structure
- RHI policy developments

Other areas:

- Add on/replacement MCHP units
- Development of battery storage guidance



The Certification Mark for Onsite
Sustainable Energy Technologies

Thank You
Questions?

Contact

www.microgenerationcertification.org

email: mcs@gemserv.com

telephone: 020 7090 1082



The Certification Mark for Onsite
Sustainable Energy Technologies